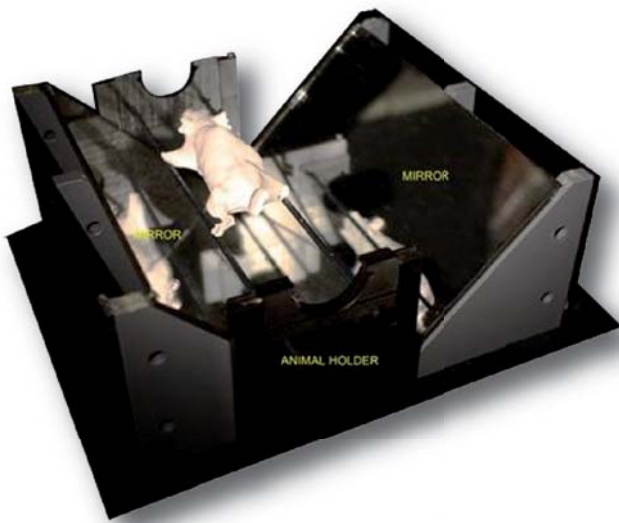




4View Module

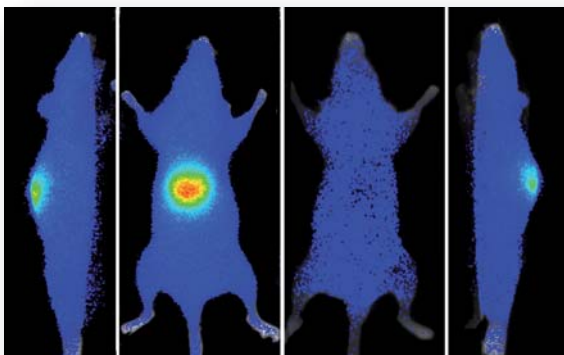
Photon Imager™ Add-on Module

Bioluminescence & Fluorescence Multi-angle Imaging



The 4View Module, add-on module of the Photon Imager™ for multi-angle acquisition, acquires in real time signal of the dorsal, ventral and both lateral views for bioluminescence and fluorescence.

- Improved signal localization
- Simultaneous recording of the four views
- Dynamic acquisition of the signal
- Imaging of virtually the whole surface of the animal
- Compatible in bioluminescence and fluorescence



Biodistribution

Cancer Research

Gene Expression

Stem Cells

Neurosciences

Pharmacokinetics

Infectious Diseases

